



ESTATE

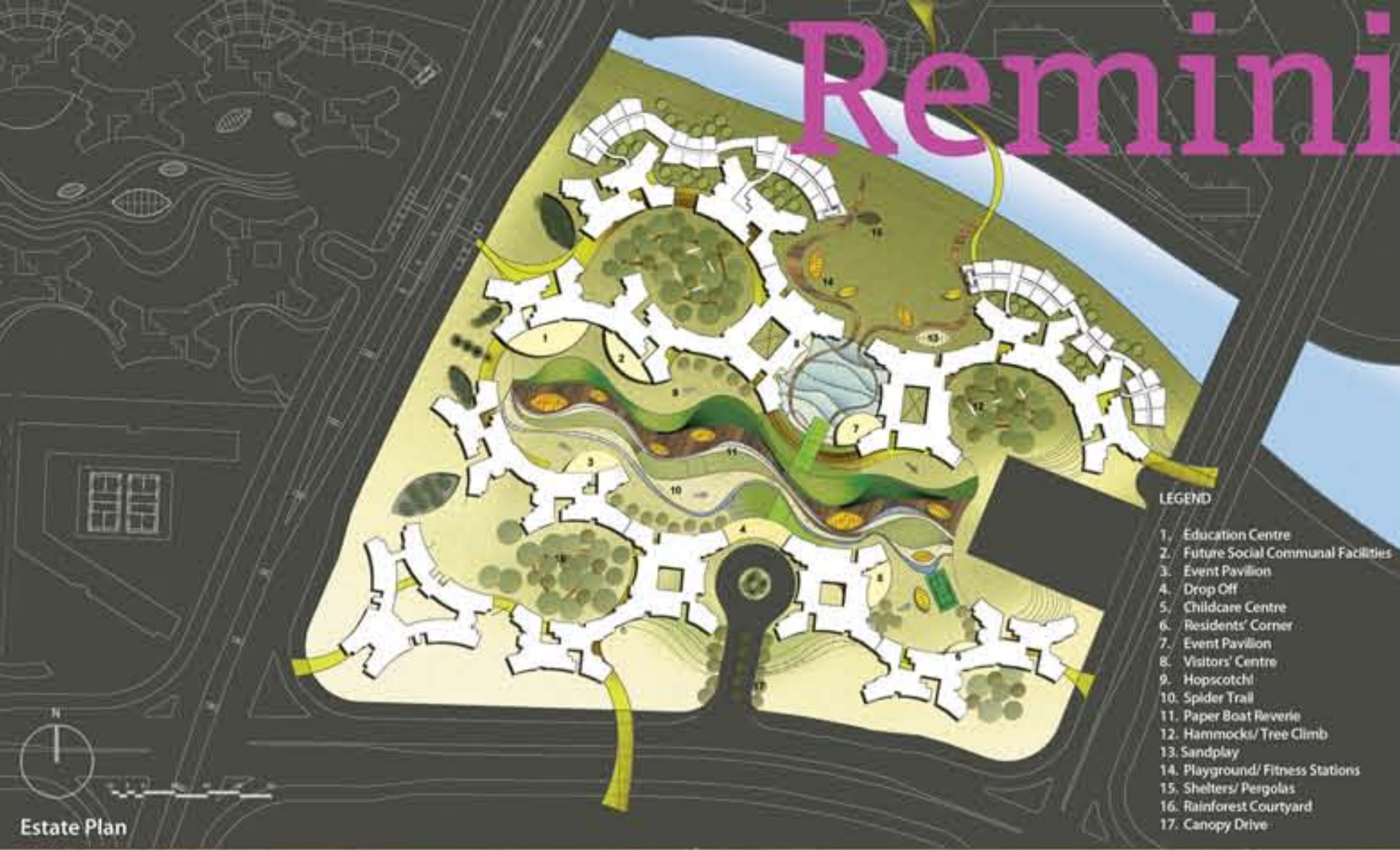
Reminiscing Yesteryear

Reviving Gotong-royong

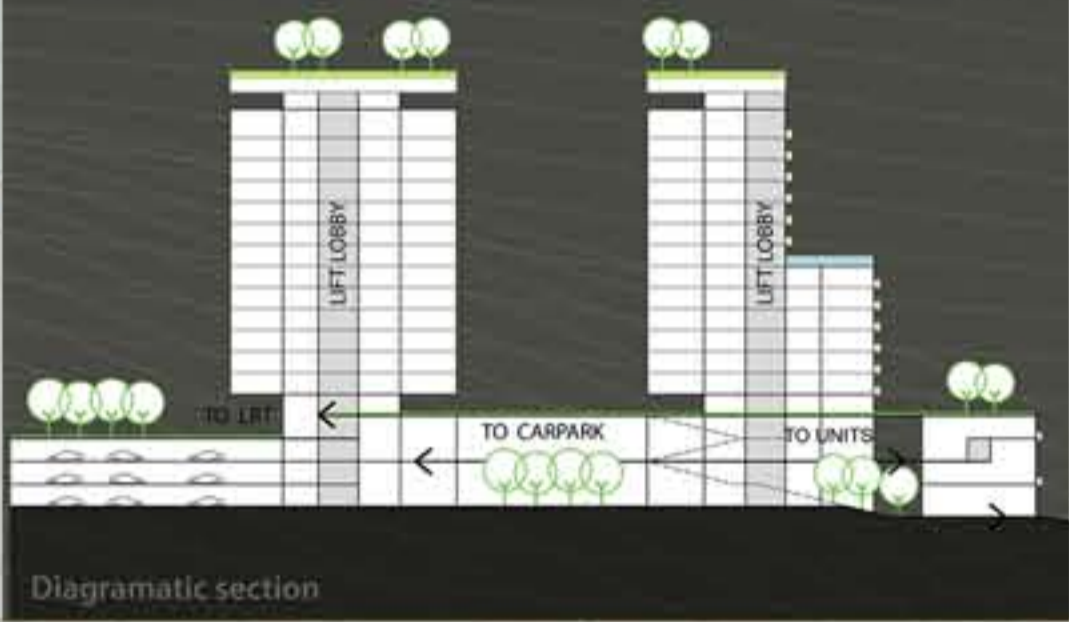
Precinct
 In correlation with the urban design concept, the precinct aims to create community-binding spaces that connect seamlessly to the waterway. "Peeling" away the landscape deck reveals intimate shelters and social communal facilities for residents from all walks of life. The heritage trail reintroduces activities of Punggol's yesteryear such as hopscotch, a spider trail and a paper boat reverie. Children building sandcastle and hammocks hanging from the adjacent trees add to the charm of Sunset Riviera.

Carparks are located below the landscape deck level, enhancing safety, reducing pollution and improving pedestrian accessibility where each housing estate is a public realm leading to the waterway promenade.

Blocks are strategically positioned to initiate site porosity and maximize views, in addition to creating breeze corridors, heightening the sensation of expedition towards the water.



Estate Plan



Diagrammatic section



Sky-Rise Sanctuary

- 
 Green Roof - insulate the building from direct heat gain
- 
 Rainwater Harvesting & evaporative cooling
- 
 Facade as environmental filters (heat, sound, glare)
- 
 Elevated Buildings - creating breezeways, access & views
- 
 Greening - to cool ambient temperature
- 
 Natural Ventilation
- 
 Bioretention Filter



- 
Canopy Drive
- 
Drop Off
- 
Sky Garden
- 
Hammocks/Tree Climb
- 
Paper Boat Reverie
- 
Lightweight Green
- 
Hopscotch!
- 
Spider Trail
- 
Lookout Deck
- 
Bioretention Pond
- 
Canopy Walk
- 
Visitor Centre
- 
Mini Golf
- 
Sand Play