

# PUNGGOL WATERFRONT HOUSING DESIGN \_ TERRACES ON THE WATER

PGH334E



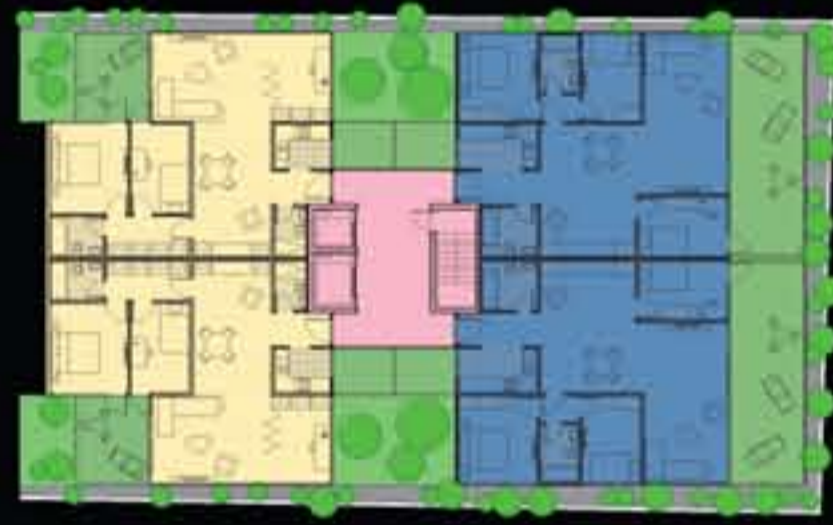
**TYPICAL BLOCK 1**  
F4.3(YELLOW) - F4.3(YELLOW) - F4.3(YELLOW)  
F4.3: FOUR-ROOM FLAT AT THE TRIAL CORNER, 87 SQUARE METER



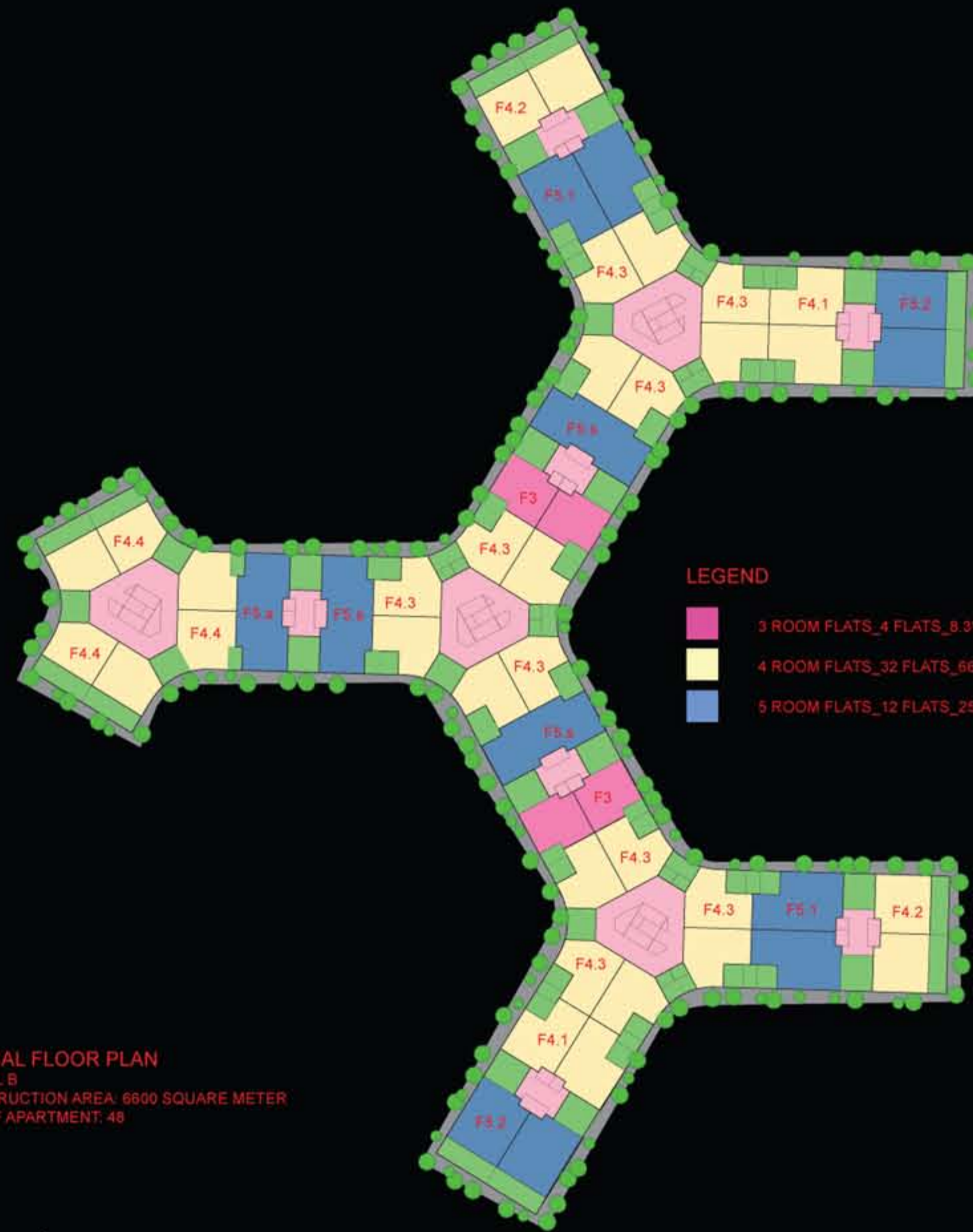
**TYPICAL BLOCK 2**  
F3(PINK) - F5.2(BLUE)  
F3: THREE-ROOM FLAT, 66 SQUARE METER  
F5.2: FIVE-ROOM FLAT WITH TERRACE, 132 SQUARE METER



**TYPICAL BLOCK 3**  
F5.1(BLUE) - F4.2(YELLOW)  
F5.1: FIVE-ROOM FLAT, 126 SQUARE METER  
F4.2: FOUR-ROOM FLAT WITH TERRACE, 100 SQUARE METER



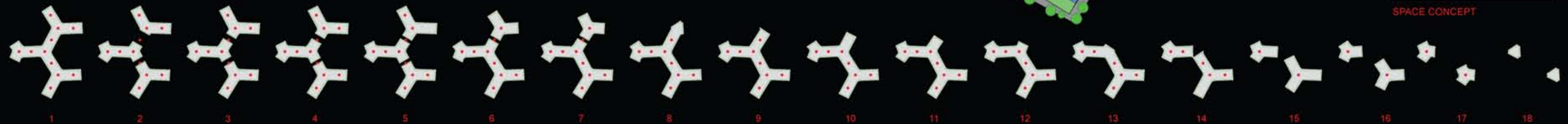
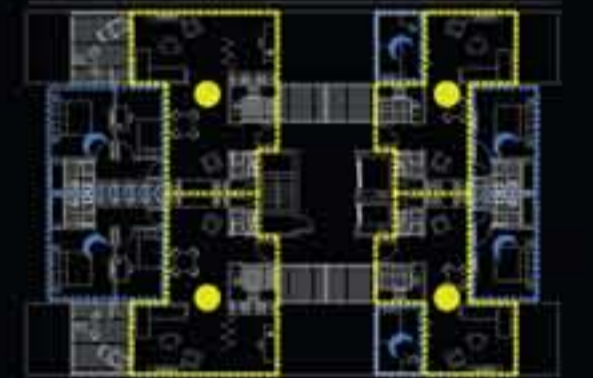
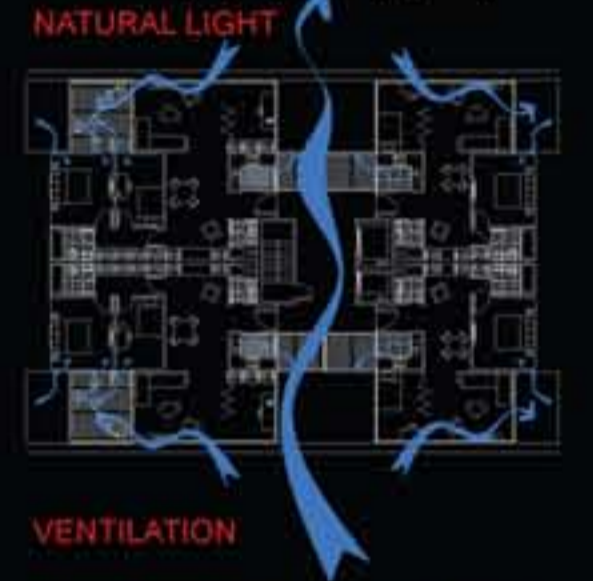
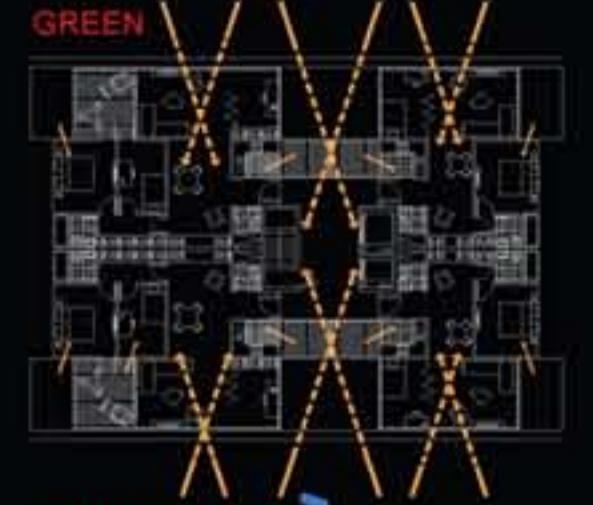
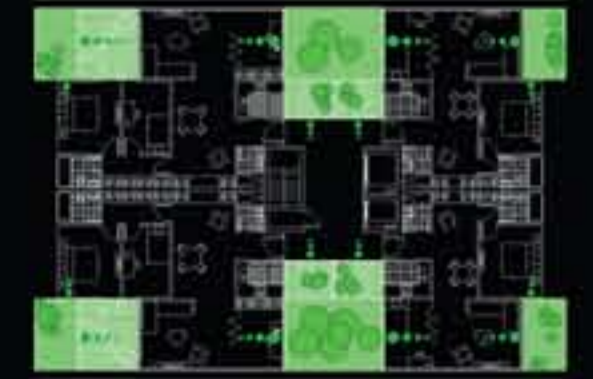
**TYPICAL BLOCK 4**  
F4.1(YELLOW) - F5.2(BLUE)  
F4.1: FOUR-ROOM FLAT, 96 SQUARE METER  
F5.2: FIVE-ROOM FLAT WITH TERRACE, 126 SQUARE METER



**LEGEND**

- 3 ROOM FLATS\_4 FLATS\_8.3%
- 4 ROOM FLATS\_32 FLATS\_66.7%
- 5 ROOM FLATS\_12 FLATS\_25.0%

**TYPICAL FLOOR PLAN**  
PARCEL B  
CONSTRUCTION AREA: 6600 SQUARE METER  
NOS OF APARTMENT: 48



**PRIVACY**  
Each level will contain a total from four to six flats and therefore, will provide a relative good privacy for residents. The angles (120°) avoid buildings to face each other frontally and therefore, increase the privacy for residents. Finally, the apartments interior will divide night time activities and day time activities in a private and respectful way for the comfort of the residents.



**NATURE IN THE APARTMENT**  
It is divided in three different types of nature. First, the domestic nature belonging on private terraces. The second one belongs to the vertical garden connecting all common circulation and the last one is the nature surrounding the plots. All three types of nature give the feeling of living among nature and soften the boundary between inside and outside and, nature and building.



**VENTILATION**  
All major living spaces and rooms within the dwelling unit will be designed with effective natural lighting and ventilation. All common areas such as staircases, lift lobbies and access corridors are naturally ventilated through the vertical gardens. The design of the external façade respect the space provided for the air conditioned units.