

PUNGGOL WATERFRONT HOUSING DESIGN_TERRACES ON THE WATER

PGH334E      



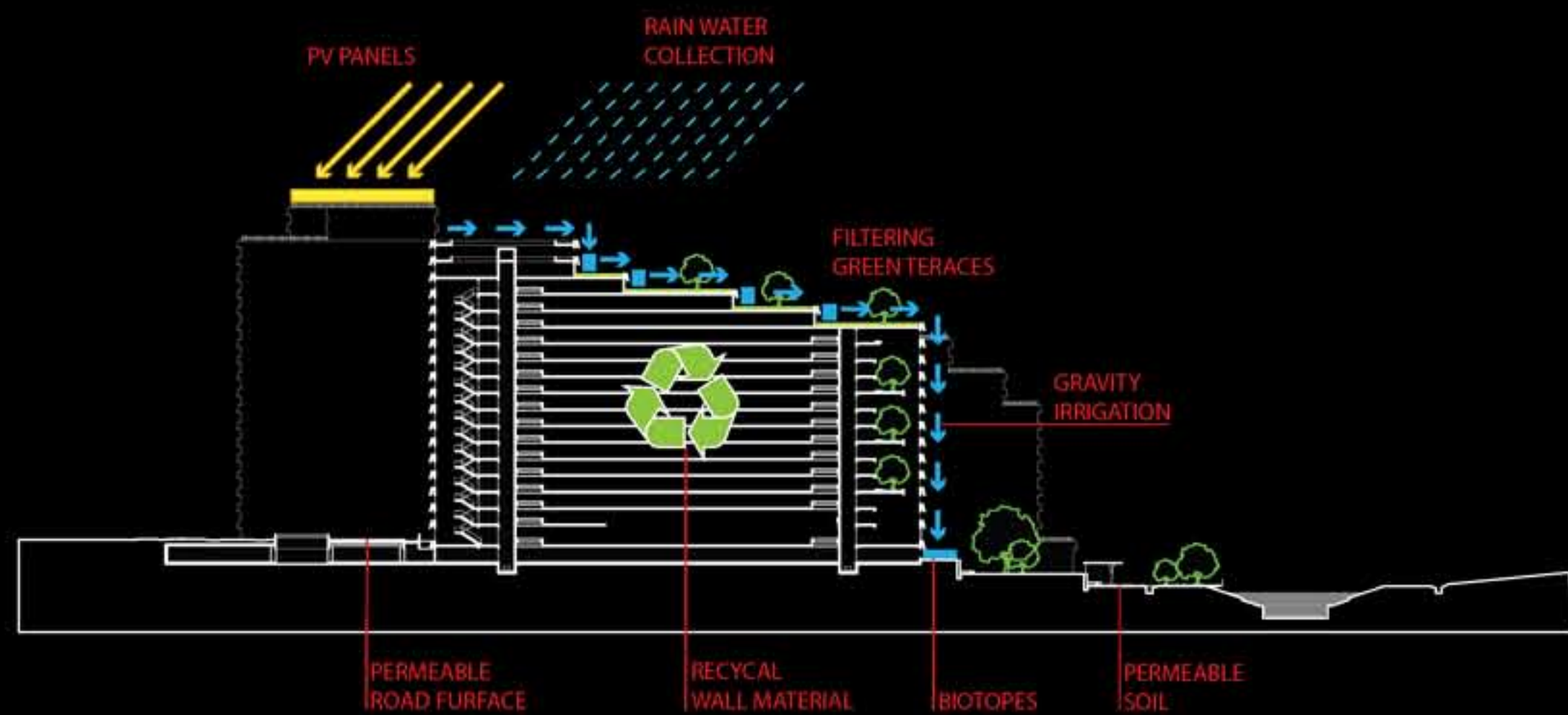
EXTERIOR COMMON GREEN

A SUSTAINABLE LANDSCAPE
 Whilst we aim to use the landscape design to provide the **best possible living environment** for the residents, through the landscape we can also contribute to the wider environment.

WATER CONSERVATION
 There are two key aims we will achieve in this project. The first is that the landscape will be wholly irrigated using only harvested rainwater. In order to achieve this we will capture as much **rainwater as possible retain and use it at source**, eliminating the need for complicated pumping and piping. We will also ensure plants selected are sufficiently hardy to endure for occasional drought conditions, and soil bodies are sufficient to maintain a healthy planting system. Secondly water discharged from the site will be cleaned, filtered and attenuated, and have no adverse impact to other 'downstream' developments. In order to achieve this we will utilize **rain-gardens, rainwater tanks, storm-water planters**, swales, infiltration trenches, permeable paving, wetlands, using to most moderns techniques and methods to maximize the benefit, and ensure the seamless integration into the landscape design.

BIO-DIVERSITY
 Through extensive planting we will encourage **the flora and fauna** to flourish. In order to further enhance the local **bio-diversity** we will aim to maximize the selection of **native indigenous species**. To encourage birds and trees and shrubs that produce berries and fruits will be planted in selected areas. Larger trees will be fitted with boxes to encourage the roosting of bats and birds. Overall the aim is to create a balance self sustaining **eco-system** from the smallest to the largest or native plant and animal species. This will be further enhanced by providing information in the form of sign boards and leaflets to inform residents of the plants and animals they are likely to observe, and the ecosystem around them.

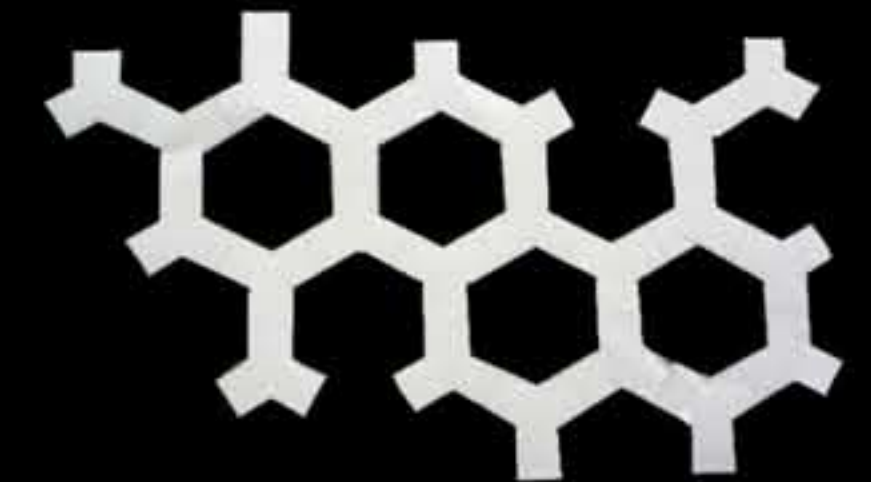
RECYCLING
 In the construction of the project we aim to use as little of the Earths natural resources as possible, this includes the **pre-growing of the trees**, using **recycled plastic** for landscape elements, using **compost from horticultural sources** and minimizing the use of artificial chemical in the landscape maintenance regime. Once the project is completed we hope to continue these good intentions and encourage the residents to engage in the maintenance of the landscape and **encourage the cycling of kitchen and garden waste** as part of the landscape maintenance regime.



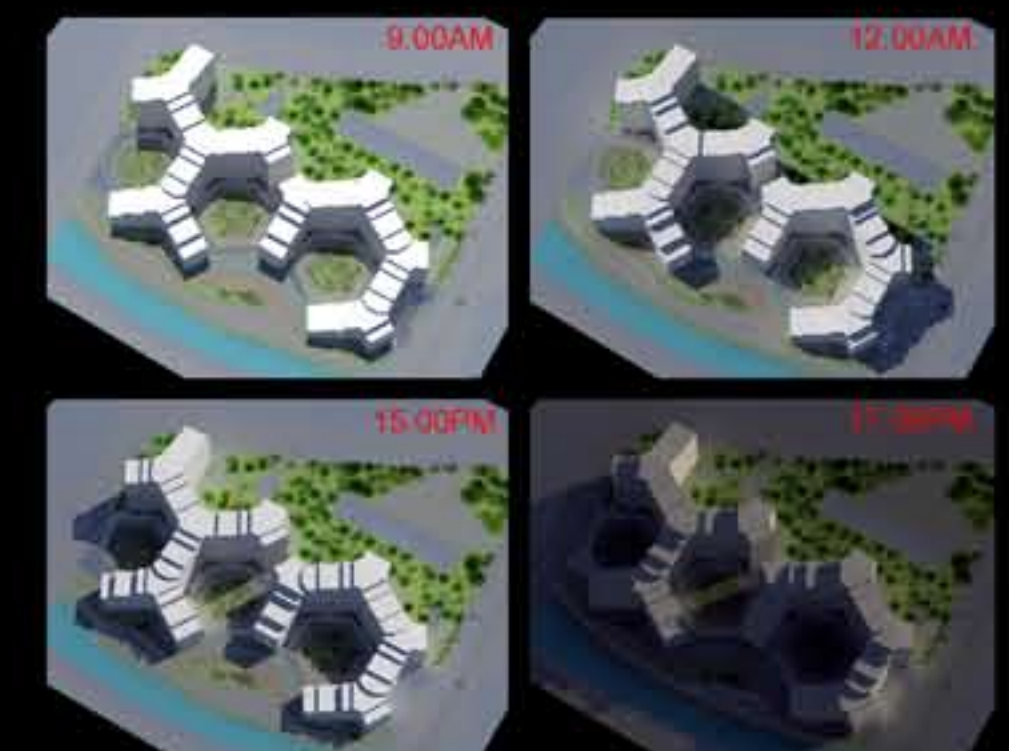
GREEN FEATURES



PRECAST ELEMENT



GRID AND COURTYARDS CONCEPT



SUN AND SHADOW_21ST DECEMBER