

# PUNGGOL WATERFRONT HOUSING DESIGN\_TERRACES ON THE WATER

PGH334E

## HUMAN SCALE AND COMFORT

The dwelling units are designed to fully enjoy the views. All of the day used rooms have obstacle-free views toward the canal, the jungle or the palm gardens. The large horizontal windows give priority to panoramas and generously bring daylight into all the rooms. The day/night zones are clearly defined in each apartment and on full height of the building to maintain good acoustical comfort for both day or night activities. All main living spaces have direct nature contact so that the cross ventilation is omnipresent in the units. Further more, each master bedroom can enjoy even more the nature with its own little green terrace.



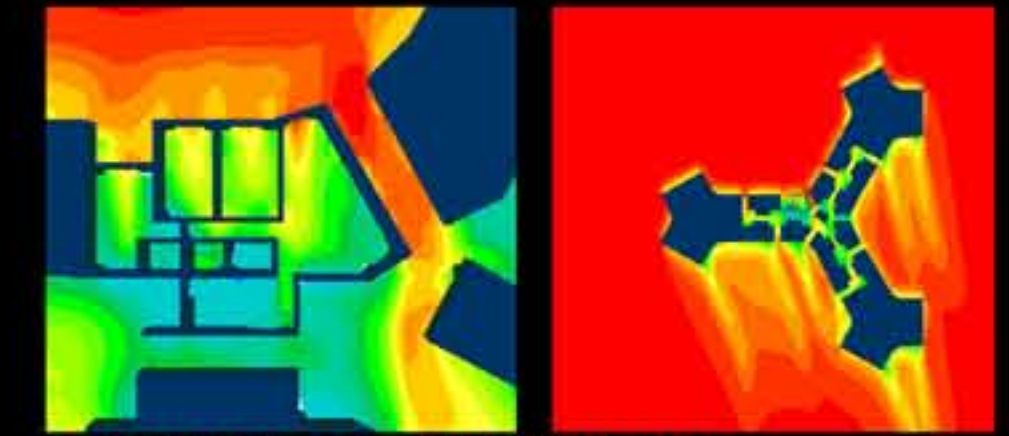
TYPOLOGY 05\_"STUDY ROOM" OPTION\_1:50



TYPOLOGY 05\_"CURRENT" OPTION\_1:100



TYPOLOGY 05\_"KING SIZE LIVING ROOM" OPTION\_1:100



CFD MODEL OF AIRFLOW THROUGH UNIT

## FLEXIBLE WITH TIME

The dwelling units gives large choices of use and modification with the family generation development. Young couples can plan a F5 as a loft, then adjust a room and an office when they have their first child, and finally turn it into a full function F5 whenever they want, to adapt to their life evolution and work style. The dimensions of the rooms are adapted for various arrangements so that each family could freely create their own living environment. For example, a desktop computer or a reading loft may be planned next to the main door following each's desire. A dressing space or a make up table may be available at the end of the master bedroom. These examples show how the apartment is designed to be customized and to adapt to each resident's life style and desire.



TYPOLOGY 05\_"STUDY ROOM" OPTION



TYPOLOGY 05\_"CURRENT" OPTION



TYPOLOGY 05\_"KING SIZE LIVING ROOM" OPTION



INTERIOR APARTMENT LIFE